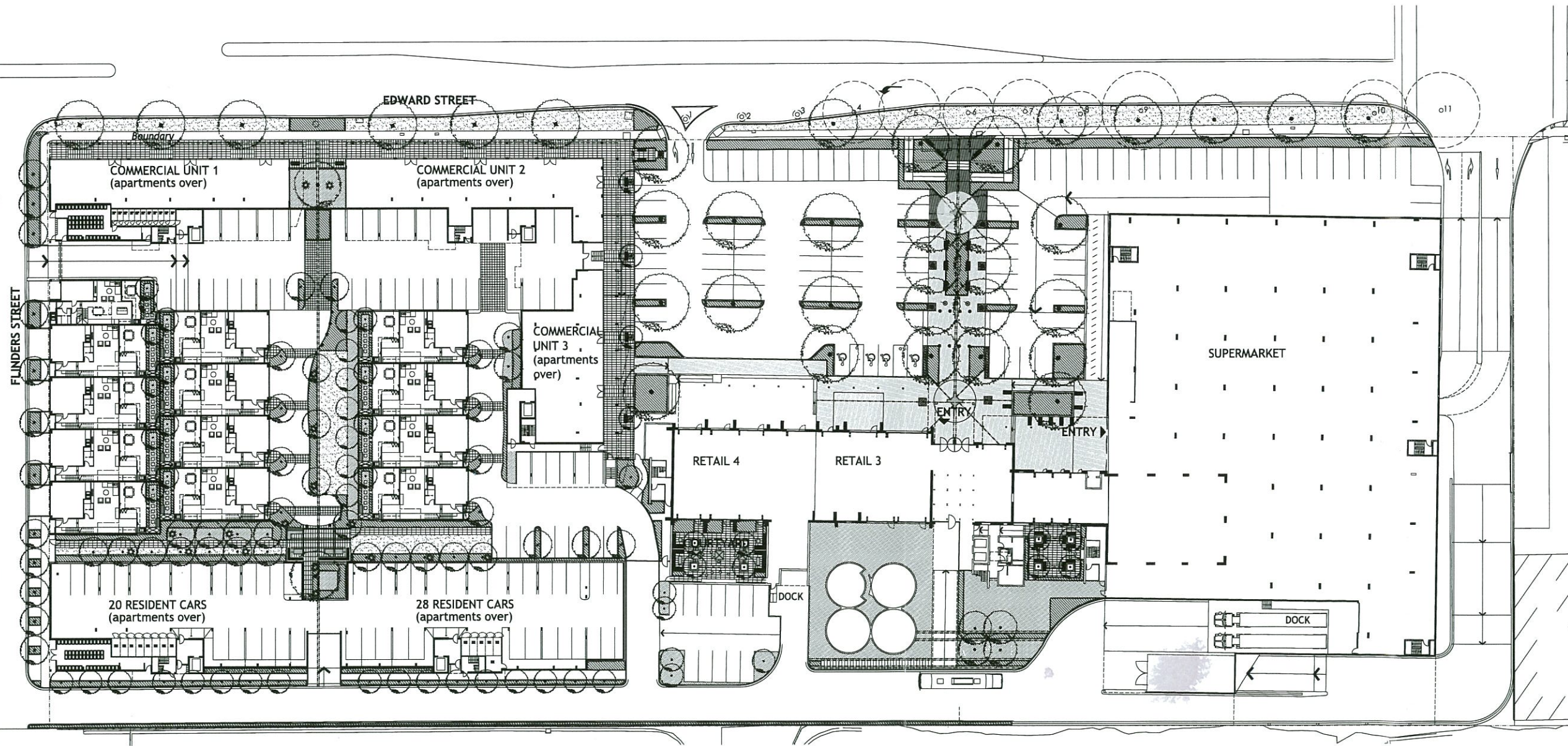


Jacaranda Chinese Elm Chinese Elm bark texture Wheat textures through paving Sculptural plantings to the boundary The Highline NY, maintains the industrial quality of the site Highline NY Layered textured planting with wheat like grasses Wheat crop emerging Emerging wheat field



Landscape design philosophy
The landscape refers to the industrial quality of the site. Long linear lines refer to the impressive scale and significance of the mill building whilst echoing the notion of emerging wheat crops. Set into the pavement are embedded rail line and randomly positioned etched pavers which refer to the history and imagery of the site. These pavers are likely to include the following: Wagga Lily brand flour, Lilies, words and images referring to the milling and weight and growing of wheat, dates and quantities, places where the flour was sent internationally, places where the wheat was likely to be harvested from and onwards for the flour.

Central to the design are two Millstone seats with reference to the two French Burr stones which were used when the mill was operational. The seats encourage communal seating and sharing of space and the pavers set into the pattern includes words that refer to the anatomy of a millstone: Spanish cross, harp, skirt, furrow, fly, land, breast and cracking. The embedded rail line gives direction towards the mill whilst adding to texture to the pavement and allowing the pattern of the millstone to radiate out into the landscape.

Generous 'wheat like' textural planting bands break the pavement up and large scale trees create a grid across the site. Bollards and flag poles define the pedestrian crossing zone. Their location in the landscape lines up with the impressive posts located inside the mill. The flags are intended as stitched hessian lily bags with reference to 'waggas'. Corten steel grates break the paving up whilst protecting trees and adding to the industrial character of the site. The positioning of mill relics and interpretive signage is integral to the landscape zones.

The forecourt of the Mill features a raised, planting area with integrated seating. Depending on tenancies and resultant awning areas, an alternative would be to provide a larger raised planter featuring an expanse of lawn (as described at L04) to reduce heat and allow for informal sitting. Integral seating, bicycle racks, bins and lighting complete the space.

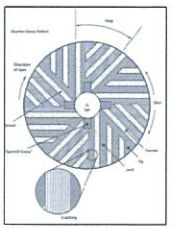
The pavement orientation changes as it moves across the front of the building. For the new buildings on site, the pavement material is the same, but is laid in a different pattern, to acknowledge the hierarchy of the mill building.

The residential precinct of the project features a red tree at the Edward Street level to acknowledge the Red Lion that once stood in this area. Relics from the hotel and interpretation regarding this are included in this space. The private residential landscape areas feature the same long linear lines as the Mill precinct, but includes different materials and plantings. Larger defined areas of lawn, shade trees and a central arbour with BarBQ and inbuilt seating are located to the southern end of the landscape spine.

Individual courtyards include a choice of tree and plantings, but all feature gravel areas with large format pavers.



Simple rectangular bench seat Textured paving bands with art inlays set into pavement Embedded rail line on site Embedded steel on site Art components set into pavements Corten steel grate Furniture that is integral to the fabric of the site Aged timber as seating or as elements in the landscape Metal on site as inspiration for signage and tree grates



Millstone anatomy

The Murrumbidgee Milling Company
Wagga Lily Flour
"There can be but one Brand. The Flour MUST BE the Best. That is what we
claim and never believe who can so well justify the original 'wagga' grain."
Murrumbidgee Milling Co. Ltd advertisement, 1927

The Mill